

FamilyWorks

# Annual Report 2019





## JAKE WEBER

Executive Director

As I sit and reflect on 2019, we are in the midst of the coronavirus pandemic and things look a little different right now! I remember 2019 as an extremely robust year! Families were taking on leadership roles, young people were actively participating in empowerment groups, participants were connected to resources, information and to each other, the food banks were full of high quality nutrition and choice, the staff and Board team was strong and responsive, and the community support was foundational! What we have learned from our social distancing is that our community will continue to find ways to help each other connect, even more so through the hardest of times.

One thing that remains a constant and which sustains all of our hope, is the love and care that the community has shown us. Our loyal donors and new partners have demonstrated that they will fight for what is right, and give voice and strength to those who don't have a voice. As I retire from FamilyWorks in June, I am comforted with the knowledge that the fabric of community strength has been woven so tightly that no one will fall through and be forgotten or unnourished, and for this, I can't say thank you enough! I plan to continue to be part of the FamilyWorks community, in whatever capacity serves our constituents in the best way, so this isn't goodbye.

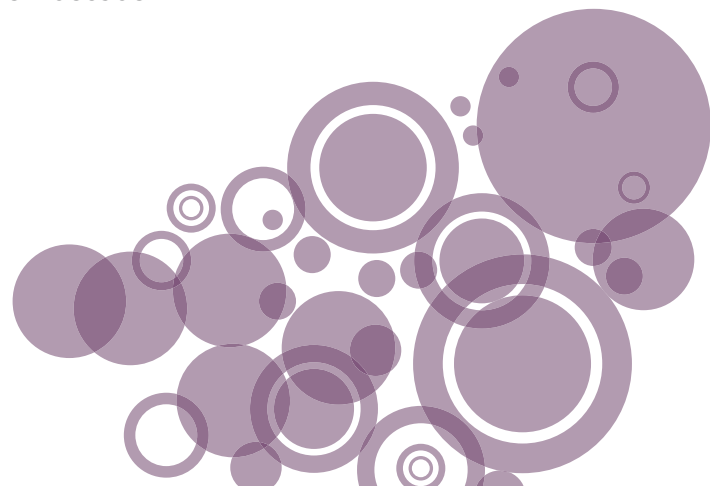


## ALESSANDRA POLLOCK

President

We want to thank our community, as Jake said, for standing with participants and others in the good times and the challenging. Without your assistance, we could not have responded to growing and changing needs in the community. And, over many years, your support and engagement have built a strong foundation, financially and programmatically, that will allow FamilyWorks to respond to the changes and challenges of 2020 and beyond.

As we all adjust to a new normal, FamilyWorks is committed to our emphasis on racial equity in practice and policy, to participant-driven programming, to innovation and flexibility in how we nourish, connect, and empower each other, and to leverage what we have learned from the last two decades for a new era with new leadership. We don't know what the future will bring for our community. Yet, we know that with the combined strength and fortitude of our many supporters, staff, volunteers, Board, and participants, FamilyWorks will be resilient. 2019 was a productive, thriving year for FamilyWorks and we are grateful for our friends and neighbors who will walk with us into the new decade.





# Food Access Programs

Our food access programs offer people in north Seattle connection to nutritious food, other essential resources, and a supportive community, nurturing greater health and resiliency for participants. For many people on an extremely limited income, the food bank resources help people save money and are an important homelessness prevention program.



## Food Banks

We pride ourselves in having a choice of the most nutritious and delicious foods for people when they visit the food bank. Our staff and volunteers sort through donations, making sure that we provide a high level of dignity in the experience, so that we can reduce the stress people are experiencing who are affected by poverty and homelessness and uncertainty. We know that our FamilyWorks community is sometimes the only community that a person has when they come to the food bank. Knowing they can come for healthy, beautiful food, other resources and a dose of camaraderie, gives people hope.

## Farewell to Mike

After 5.5 years with FamilyWorks (and 25 years in food justice), we wish Mike Cox a beautiful return to his beloved hometown of Kansas City, MO, and thank him for caring so deeply about our participants, staff and volunteers. He has helped to create such a safe, calm, and nourishing environment for all. Thank you, Mike!

## Mike's Message

"It's proving to be much harder than I thought it would be to step away from FamilyWorks after nearly 6 years. This has been a refreshing, challenging (at times), and ultimately transformative experience for me. I leave knowing that FamilyWorks Food Banks are in a strong position to continue being a responsive and effective resource in fighting hunger and in connecting our neighbors to viable paths to empowerment. I also know that my well-qualified successor, Tobey Solomon-Auger, will continue to bring both nourishment and joy to all we serve. From the bottom of my heart, thanks for this amazing journey I've had with all of you!"

# Food Access Programs Highlights

- The City of Seattle’s Human Services Department (HSD) renewed and increased funding for our food banks, deliveries, and backpack programs.
- As well, HSD awarded us a new contract to hire a Community Connector to increase access for our food bank participants to needed financial resources and other community services.
- Food Lifeline started delivering pallets directly to Greenwood Food Bank, increasing our service capacity.
- We expanded our Grocery Delivery Program to seniors at Clements Place.
- As we move toward a grocery shopping model, we purchased a new freezer with funds from the Anna Banana Milk Fund.
- Collaborated with Phinney Neighborhood Association in community events such as Hunger Goblins, Rainbow Hop, Winter Festival and Crafts and Holiday Program.

We’ve had so many wonderful food drives through generous partnerships over the year,  
**THANK YOU!**



**246** tons of food distributed via food access programs

FamilyWorks distributed 246 tons of nutritious food to 2,705 children and adults through FamilyWorks’ two food banks and our food distribution programs.

We saw our highest number of duplicated households (3,077) ever in the month of October of 2019.



**43,239** visits to our food banks

People visited our food banks or received grocery deliveries a total of 43,239 times during the year, an increase of 8% over the previous year.



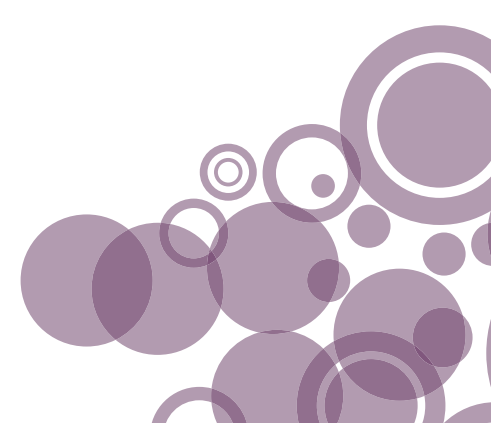
**2,639** grocery deliveries to home-bound seniors and individuals



**3,340** snack packs delivered to families at Mary’s Place North



**1,381** “Power Packs” filled with food delivered to students at three local elementary schools



# Family Resource Center

Community supporting community, in accessing children's basics, resources, camaraderie, and information to help families connect and to thrive!



## Edsel's Message:

"As the new Family Resource Center Manager, I believe I have one of the best jobs in the world. I'm able to enhance family programs, provide resources, connect to participants' stories, and provide opportunities for family empowerment. What really inspired me to apply to be the new Family Resource Center Manager is seeing our participants being really involved in our programs and being able to collaborate with them on how we can meet the community's needs."

- Edsel Blanche, Family Resource Center Manager

## Program Updates:

In addition to our ongoing programs of parent education, parent/child playgroups, advocacy and basic needs, we added the following programs in 2019, based on the interests of our families:

- **Cooking Matters** classes with Solid Ground for teens and for Spanish-speaking families at the Wallingford Presbyterian Church
- **Cooking workshops** led by participants who shared recipes from their cultures including Mexican, Indian, and African foods

- Empowerment programs for girls through **Girls on the Run** and **Powerful Voices**. ([Check out Yaraly's write-up on page 7!](#))
- Parenting classes in partnership with the Greenwood Library
- Family field trips to MoPOP, Seattle Children's Museum, Seattle Mariners, and Seattle Children's Theatre; the Parents Getting to Know Their Teens family bonding activity

## Advocacy:

Our family programs staff provided advocacy, information and referral, in English and Spanish, five days a week at our Wallingford location, and we began offering information and referral services at our Greenwood food bank at least once a month.

## Resource Donations:

Thank you to the generous individuals, schools, and companies for donating diapers, baby supplies, clothing, toys, books, school supplies, holiday gift cards, and more. Our families felt a compassionate touch from others in the community. Thank you!

## Special Thanks To:

Kids on 45th – what a terrific partner you have been in helping all families in our community with clothing for their children. We will miss you.

Green Lake Elementary School Social Justice Committee Diaper and Wipes Drive was such a huge success they kept us in diapers and wipes for 5 months!

Everyone who helped with supplies and programs!



# Resource Center Highlights



## TOTAL PROGRAM IMPACT

**641** Families Participated in  
**216** Programs



## PARTICIPANT-LED PROGRAMS

**5** Programs developed  
& led by participants



## PLAYGROUPS

**177** families participated in  
**208** playgroups



## NIKE SHOE PROGRAM

**356** individuals received  
new Nike sneakers



## FAMILY HOLIDAY PROGRAM

**86** families received a  
family holiday experience



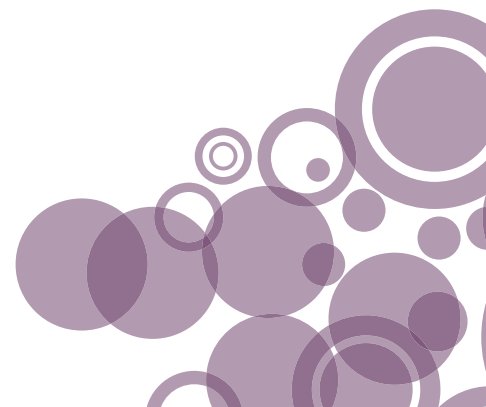
## DIAPER PROGRAM

**225** local families received  
diapers from our Resource Center



## BACK-TO-SCHOOL PROGRAM

**155** children received  
backpacks with school supplies



# Words from a Masters of Social Work Intern

## Reflecting on Powerful Voices and Her Experience at FamilyWorks



I am Yaraly Preciado-Macedo, an MSW student from the University of Washington and currently an intern at FamilyWorks. I decided to pursue my master's in social work due to my own life experience. I grew up in a marginalized community where I witnessed and experienced injustices firsthand. With my experience, I wanted to help navigate and alleviate barriers for others.

I enjoy my practicum experience at FamilyWorks. Every day is different, so I never know what to expect which provides me with a lot of opportunities for learning. I am not from the area in which our participants live in so being a student intern here helped me learn more about the resources of this area and how to engage with a community that is different from my own. Some of my daily responsibilities as an intern are to help participants with whatever needs arise, provide resources to the community and engaging community members to enroll in our programming.

Through FamilyWorks, I have also gained experience facilitating programming for middle school aged, self-identified girls through using the Powerful Voices curriculum.

Powerful Voices is a program aimed at young girls to discuss what it means to be a girl in this day and age. We provide a safe space for girls to realize their dreams, engage with their community, and promote social justice by addressing issues at the root. I really enjoyed my time leading this program. I was able to connect with the girls and was able to provide a space where they felt comfortable to share their own experiences. The participants of the group were able to engage with the material. They were able to reflect upon their own life experiences, about what it means and felt like to be a girl, and how they have been treated by others and the media. We held active discussions revolving around identity, positive girl culture, and community. After each discussion we had about the topics, I felt like the girls were able to gain something from the session and apply it to their life.

Advice that I would give to future practicum students at FamilyWorks is to regularly practice self-care. The resource center gets pretty busy during certain hours of the day that it can be overwhelming. There are also time when you are working with a participant and they share their story with you. Sometimes those stories can be hard to take in. For your own well-being, it is important to actively practice self-care so that you don't experience burnout during your internship.

After I complete my MSW degree, I hope to work with the Latinx community in some capacity within the healthcare system.

# Volunteers

We are grateful for the volunteer help of high school community service students (Bishop Blanchet HS, Roosevelt, University Prep, Holy Names), as well as UW and Central Colleges Service learning students.

We are most thankful for the social work interns who choose us as an organization to apply their skills and advance their learning. Alicia Nishimura shares her experience with you:



Hello! My name is Alicia and I have been interning with FamilyWorks since July of 2019. I am currently in a social work graduate program through the University of Denver, with an expected graduation date of June 2021. I am also a licensed Substance Use Disorder Professional and I work at Swedish Medical Center in Ballard, WA. I decided to pursue my master's in social work (MSW) because I am passionate about advocacy and I want to continue learning so that I can show up as my best self for those I am working with.

Interning at FamilyWorks has provided me with a wide variety of opportunities to serve my community. Most of my experience has been in direct service whether participating in our weekly playgroups, providing resources and referrals to individuals and families, running an after-school group for middle school age girls and helping with weekly diaper

distribution. I have also had the opportunity to assist in the foodbank at both the Wallingford location and the Greenwood location. During the holidays I was given the opportunity to run a holiday program and be a part of planning other programs. I have also helped in writing two grants.

One of the most fruitful experiences thus far at FamilyWorks has been facilitating an after-school program called Powerful Voices. This program is tailored toward middle school aged girls of color to help them foster positive female relationships and offer a safe place to discuss the challenges they face in their daily lives. It is no surprise that middle school is often a challenging time for most and being able to provide an opportunity for girls to come together and discuss what it means to them to be a girl and to have positive relationships with other girls only better provides them with a chance at creating authentic, strong relationships.

If I were to have the opportunity to sit down with upcoming practicum students, my biggest piece of advice would be to try everything FamilyWorks has to offer at least once. There are plenty of opportunities to work with members in the community and to strengthen your direct services skills. However, there are other opportunities to practice the more social planning aspects of being a social worker in a non-profit organization. By being open and willing to try anything that is available you can figure out what sets your soul on



fire and what makes you wake up in the morning filled with passion.

For me, I do not have a clear, direct path laid out for myself upon completion of my MSW. I hope to one day be able to work with pregnant and parenting women who are dealing with substance use disorders in a preventative way to avoid child welfare involvement. Currently in Washington state the Division of children, youth and family's child welfare program is unable to intervene while a woman is pregnant. This causes them to intervene in the very beginning after a child is born which does not leave much time for support to the mom or dad to secure stability and safety. This then often leads to out of home placements, traumatizing both the parents and the child. I hope to be a part of pioneering a prevention program that helps families get the help they need while they are still pregnant, which provides evidence that they are able to stay sober, ultimately cutting down on removal of care from the parents.

“ I love being part of an organization that has a direct impact every day and is full of so many committed, passionate people: staff and volunteers.”  
– Kat Johnson, Volunteer Coordinator



David Tate, on duty as official Grill Master for the 2017 Annual Adobe Software BBQ.

## In Memory of David Tate

“ Working and volunteering at FamilyWorks has shown me that there is more to life than just thinking about myself and my situation: there is love, hope and satisfaction in the simple acts of giving time and effort toward helping others. When I am asked why I am so dedicated and give so much of my time to this organization, I say FamilyWorks saved my life!”

David was a huge part of our family. He found FamilyWorks over 15 years ago, when he was struggling with alcoholism and homelessness. He found food, a caring community and a purpose at FamilyWorks. After gaining his strength and sobriety, David spent most of his days at work in the Food Bank, lifting, sorting, cleaning, but eventually would contribute to almost all functions of the organization. He had a deep connection to many of our participants, staff and volunteers. He was especially known for his computer savvy, his cooking and gardening skills and his powerful public presentations. He won the Kerwin Manuel Impact award in 2017 ([and featured in our 20 Year Retrospective video that year](#)). We sure will miss David. He was a great person.

# Volunteering



## TOTAL VOLUNTEER IMPACT

**542** volunteers gave  
**8,813** hours in 2019



## FOOD BANKS

**434** volunteers gave  
**6,524** hours in 2019

434 people gave 6,524 volunteer hours helping with food sorting & distribution, food rescue, home deliveries, and food drives.



## COMMUNITY GROUPS

**23** groups volunteered  
**59** times

59 Group shifts from 23 companies, organizations or schools volunteered with FamilyWorks:

- WikiHow
- Tableau
- University House
- evo
- Molly Moon
- Liberty Mutual
- Amica
- Gates Foundation
- City of Mercer Island
- Seattle Sounders
- Salmon Bay Community Lending
- Splash
- 517th Shilshole Scouts
- Boys & Girls Club
- Michelle Williams Group
- Shelly Sundberg's Group
- Meridian School
- Seattle Academy
- Green Lake Elementary School
- Verity Credit Union
- UW students
- Chicas de Hoy
- Lora Mason Ambassadors Program

\*PCC volunteers are not included in these totals, but every other month a group of volunteers help package and label donated PCC bulk items to distribute.



## BOARD MEMBERS

**12** people volunteered  
**482** hours as board members



## FAMILY RESOURCE CENTER

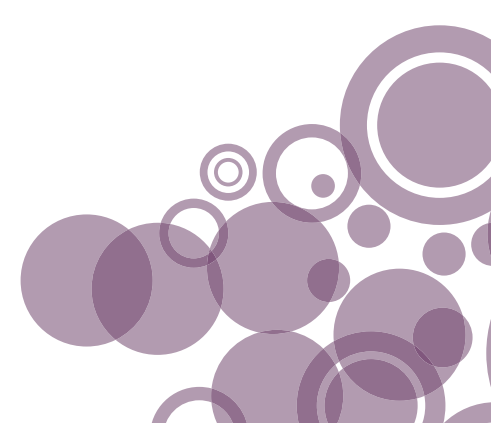
**142** volunteers gave  
**1,807** hours

They helped with admin work and basic needs distribution, Reading Buddies, special events, programs, and information & referral.



## COMMUNITY SERVICE

**15** volunteers completed court mandated community service





## Race and Equity Initiative

At FamilyWorks, we know that true empowerment and resiliency for all individuals and families is only possible by dismantling institutionalized racism and inequities within our own organization. Two years ago, we started our Race & Equity Initiative with committees made up of staff and board members to address these issues throughout all facets of our organization. Through conversation and discussion, we've tried to educate ourselves and each other and move from a place of theoretical change toward concrete action. In 2019, our efforts included:

- An increase in the number of cultural and family programs developed and led by FamilyWorks participants.
- An effort to strengthen access to community services for our participants by applying and receiving funds for a new Community Connector position.
- Outreach to Latinx community members via the Spanish-language radio show “Comunidad con M” on M Radio Live.
- Translation of newsletters, self-care packets, welcome forms, media release agreements, and food bank letters into multiple languages.
- The development of an equitable Media Release Agreement and policies regarding participant storytelling and fundraising to increase organizational accountability.
- The creation of an empowerment language sheet to address any microaggressions or instances of bias and create a more welcoming environment for our participants.
- The development of curriculum for volunteers to provide education and context around equity work.
- Further racial equity education for board and staff members through the People’s Institute for Undoing Institutionalized Racism (thanks to Seattle’s Human Services Department!), and monthly readings and conversations with the board of directors.
- Sharing our anti-racist values by using our position in the community as a platform to engage in educational conversations with our peers and constituents.

We are continuing our learning and growth to serve our community with equity and racial justice!



# FamilyWorks Staff 2019

Along with our volunteers, FamilyWorks staff put their heart and soul into this work, creating an environment where our entire community can feel respected, where we have opportunities for growth and where we can all make a positive impact.



**Awela Aboudou**  
Family Programs  
Coordinator



**Joey Ashenbrenner**  
Development and  
Communications  
Manager



**Serena Barr**  
Special Events  
Coordinator



**Edsel Blanche**  
Family Resource  
Center Manager



**Mike Cox**  
Food Bank  
Manager



**Kat Johnson**  
Volunteer  
Coordinator



**Cassius Kim**  
Data and Office  
Coordinator



**Kirby Lochner**  
Communications  
Coordinator



**Elsie Martinez**  
Family Programs  
Coordinator



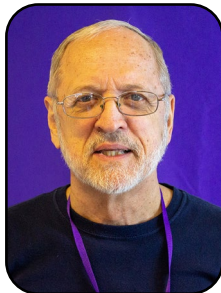
**Gladys Martinez**  
Teen Parent &  
Family Programs  
Coordinator



**Pete Metzfeld**  
Food Bank  
Coordinator



**James Moody**  
Food Bank  
Coordinator



**Jesse Shandrowski**  
Driver



**Tobey Solomon-Auger**  
Food Bank  
Coordinator/Driver



**Jake Weber**  
Executive Director

## Former Staff Members



**Patrick Law**  
Food Bank  
Coordinator/Driver



**Launa Lea**  
Family Resource  
Center Manager

## Interns:

Alicia Nishimura, MSW, Denver U.

Yaraly Preciado Maceda, MSW UW

Page Robinson, Cornell

Zane Smith, UW Psychology

Sam Stones, UCBI Intern, UW

## Board Members/Executives in 2019

What would we do without the hard working visionary leadership of our Board? Their insight and behind-the-scenes help with infrastructure, development, and other mission-based activities keeps us growing strong. They are a mighty bunch!

Scott Allard

Clara Behnke

Clare Breidenich, Past President

Gabe Castillo

Anindita Chatterjee

Rev. Tiare Mathison

Caroline Mburu

John Olson

Alison Parsons, Treasurer

Alessandra Pollock, Vice-President

Jon-Michael Pratt, President

Megan Scoville, Secretary

# Funding

Income for 2019



- In-Kind (\$1,076,875)
- Contributions (\$525,246)
- City/State Contracts (\$304,314)
- Special Events (\$116,967)
- Grants (\$76,6429)
- Interest/Other (\$6,649)

Expenses for 2019



- Program (\$1,795,004)
- Management & Fundraising (\$359,135)

Income vs. Expenses



- Income (\$2,104,480)
- Expenses (\$2,154,139)

## Public Funding Partners



“ We had just moved to Seattle with no family and friends, but with a 6 month-old baby. It is really difficult trying to raise a baby on a single income. Moms watch every penny but wish we can do more for our children. Just the fact that a place like FamilyWorks is here for families makes me feel that the city we live in does care and wants us to be happy and healthy.”  
 – Elizabeth Yoon, FamilyWorks Participant





# Thank Your For Making An Impact

To Our Donors – We are so thankful for the generosity of each and every one of you who have compassionately shared resources with us so that our neighbors and families can be nourished, connected and empowered. We thank you for believing in our programs and the power they have to shape a stronger community for everyone! We are most definitely stronger together and we thank you for being such a critical part of this work.

## 2019 Individual Cash Donors

|                                      |                                    |  |
|--------------------------------------|------------------------------------|--|
| Chris Abbey                          | Dean Barnes                        | Elana Bruinsma                         |
| Molly & Marco Abbruzzese             | Erica Barnhart and Matt Barnhart   | Claire Burnett                         |
| Margaret Achterman                   | Leya Barr                          | Leslie Butler                          |
| Cynthia Adams                        | Robert Barrett                     | Janet Buttenwieser and Matthew Wiley   |
| Erik Adams                           | Thomas Barwick                     | Karen Calara                           |
| Paul Adler                           | Martha Baskin                      | Alexia Cameron                         |
| Suzi Tedesco & William Affolter      | Paula Matthews & Larry Baum        | Lance Campbell                         |
| Elke Van De Velde and Aseem Agarwala | Jessica Baxter                     | Leah Lee and Aaron H Caplan            |
| Genevieve and Mark Agopsowicz        | Kerby Beckman                      | Alan Caplan                            |
| Lisa Alado and Gregory Ettl          | Clara Behnke                       | Ruth Caple                             |
| Kerry Albright                       | Emerson Beishline                  | Nichole Carlson                        |
| Amanda Allen                         | Erica and Herbert Bergamini        | Mark V. Carpenter                      |
| Evelyn Allen                         | Lauren Berkowitz                   | Anonymous                              |
| Miles Allen                          | Andrea Bernasconi                  | Deb Carstens                           |
| Rebecca Allen                        | Erin and Ethan Bernau              | Janis Case                             |
| Shary and Terry Almasi               | Hayley Berra & Carlos Valdes Lopez | Mayra Castaños                         |
| Yolanda Alvarado Mendoza             | Alexis Betts                       | Lisa and Gabe Castillo                 |
| Jennifer Amsterlaw                   | Denise Bevacqua                    | Stacy & Ramiro Cecchet                 |
| Becky Anderson                       | Jack Bigelow                       | Wendy Chamberlin                       |
| Pam Anderson                         | William Bigelow                    | Jennifer and Charles Hughes            |
| Rebecca Anderson and Robert Earhart  | Jamie & Adam Bird                  | Rachelle and Paul Chapman              |
| Sally Anderson                       | Carla Bitter                       | Rosalinda Chartrand                    |
| Anonymous                            | Britt Black                        | Anindita Chatterjee                    |
| Emilia & Cyrus Ansari                | Christina Wright and Luther Black  | Alpha Chen                             |
| J. Cyrus Appell                      | Jess Blanch & Michael Appleton     | Nancy Long and Frank Chopp             |
| Erika & Austin Ashenbrenner          | Barbara Blankley                   | Kimberly Christensen and David Sielaff |
| Wendy & David Ashenbrenner           | Paul Bloom                         | Lisa Christofferson                    |
| Janet Auh and Ryan Mallory           | Hal Blumberg                       | Susanna Clark                          |
| Janis Avery and Mary Kabrich         | Jen & Jonathan Boone               | Julie Young and Bruce Clarkson         |
| Michael Avery                        | Serge Boro                         | Linda Clifton                          |
| Amy Avnet and James MacConnell       | Ann and William Bowden             | Melanie Cohen                          |
| Amy Baernstein                       | Alison Bower                       | Robin Colleran                         |
| Judith and Max Bailey                | Jane Ann Bradbury                  | Lucrezia Colonna                       |
| Lynette Baisch                       | Debbie Breer                       | Martha Comfort                         |
| Emory Baldwin                        | Clare Breidenich                   | Mary and Mark Comstock                 |
| Gunnar Baldwin                       | Katie Breitling                    | Peggy Confer                           |
| Katherine and Caleb Banta-Green      | Martha and Larry Breslauer         | Elizabeth Connolly                     |
| Donna & Christopher Barker           | Cathy & Michael Bronsdon           | Lara Constable                         |
| Caroline Barnes                      | Aaron Brooks                       | Jill Corddry                           |
|                                      | Hien Brown                         | Annie Cotton                           |
|                                      | Linda and Steve Brown              | Susan Coupe and Mike Coleman           |
|                                      | Kate Schultz & Jim Bruene          | Sarah Cresswell                        |

## 2019 Individual Cash Donors [continued]

Adam Criswell  
Kathleen Crompt  
James & Lee Crouse  
Robert Curley  
Leslie & Brent Curran  
Joseph Curtin  
John Curtin  
Mary Anne Curtis and Amy Schwegler  
Alicia Cusack  
Marilyn Damato  
Caitlen Daniels  
Elizabeth Darlington  
Mark Davidson  
Davidson Family  
Ann Davies  
Ewa Davison  
Jamie Dayton  
Mari Osuna and Adam de Boor  
Margreet De Leeuw & Peter Van Der Ven  
Delaney Dechant  
Kim Decker  
Bev DeCook  
Marion and John DeForest  
Anonymous  
Elisabeth Dekker  
Jon deLeeuw  
Joshua DeLong  
Kendra Demuth  
Melinda Denson  
Richard Dermer  
Patty DeVore  
Barbra and Nick Dey  
Laurie Dils  
Emily & Lisanne Dinges  
Kari Kelly and Gene Dodd  
Heather Dohan  
Julie Doll Allen and Stephan Doll  
Holly Kellog and Michael Doyle  
Emily Drake  
Megan Drinnon  
Ellen and Edward Duffield  
Emily Dunham  
Lauren Dunnington  
Casey Durfee  
Rebecca Durham and Patrick McDonald  
Laura Dwyer-Lindgren  
Jeanne Eagleson  
Katherine Eastwood & Christy Morris  
Qurratul Ain Ebanks  
Emily and Michael Eberle-Levine

Stephanie Eberts  
Linda & Buckley Eckert  
Jane Elliott  
Patricia Emmons and Shmuel Elad  
Kim and Owen England  
Sean Erhardt  
Nan Evans  
Birte and James Falconer  
Dr. David Sherman and Jeanette Farrell  
Jean Feagin, Ph.D.  
Ali & Sean Feary  
Ron Feigal  
Dian Ferguson  
Nancy and Donald Ferkingstad  
Julie Ferkingstad  
Mark Ferkingstad  
Nina Ferrer  
Young Jee Filer  
Elissa and Stan Fink  
Patricia and Bruce Finlayson  
Kathleen Fisher  
Elizabeth Flavin and Paul Grekin  
Jamie Flaxman  
Mary C. & Denny Fleenor  
Daniel Fleming  
Gregory Flood  
Tim Flynn  
James Fogarty  
Dan Ford  
Lorna and Marcus Forgey  
Brian Forsman  
Franklin William Fort  
Tim Fortenberry  
Ivan Foster  
Anne Fote  
Joyce Fowler  
Jennifer and Joe Hurley  
Renee Fredrickson  
Chadwick Freeman  
John Freeman & Cedar Burnett  
Bridget Frey and Devin Parry  
Terry Furchgott  
Andrew Futerman  
Cheri & Lawrence Gail  
Brandi Gaines  
Jeni and Tom Gaisser  
Paula Gallagher  
Bruce Galvin  
Elizabeth Gamberg  
Helen Gamble  
Ann Gardner  
William Garrison  
Timothy Garrison

Alison Gates  
Gail Gatton and Mark Wittow  
Jennifer Gaus & David Lion  
Lauren and Peter Gaylord  
Jeanette Geary  
Christine and David Gedye  
Annie Geer  
Amy Gilbrough  
MaryBeth Gilbrough and Tom Helser  
Felicia Gittleman  
George & Donna Gleason  
Kerstin Gleim  
Janice and Lawrence J. Gockel  
Marjorie Goldman and Gary Prince  
Molly and Daniel Goldman  
Anne Good  
Kazuye Good  
Lori and Ian Goode  
Peter Graham  
Ireta Graube  
Patricia Graves & David Nash  
Deborah Green  
Laura Thorne and Alan Greenbaum  
Darcy & Craig Greene  
Barbara Greenough  
Margi and Tim Grein  
Leo Griffin  
Daniel Grunbaum  
Ruby Grynberg  
Carrie Richard and Brian Guggino  
Priya Gupta  
Anna Gurevich  
Helena & Doug Haas  
Barbara and Paul Haas  
Jenny Hacker  
Kathryn Schaefer and Glenn Hackney  
Nazim Haji  
Malia Hardin  
Mary and Maurice Harding  
Loretta Harkness  
Denis Harney  
Arlene Harrington  
Sophie & Elizabeth Hartshorn - Sall  
Chris Haven & Tony Dodson  
Ryan Hawthorne  
Carolyn and Greg Heberlein  
Mary and Joseph Heim  
Sarah Hein  
Mary Helbach  
Susan Helbig and Rory Link  
Olivia Hendrix and Greg Meily  
William Hernandez  
Ruth & Robert Herold  
Billie Hess

## 2019 Individual Cash Donors [continued]

Adrienne Hidy  
Ms. Katherine Hightower  
Sandy & Steve Hill  
Tessa Hill  
Marybeth Hillard  
Juli and David Hills  
Karen Hirsch  
Michelle and Adam Hitch  
Iris Hodgson  
Marie Hoffman  
Heather Holmback  
Karen Horvath  
Kate Hotler  
Nancy Howard and Martin Chew  
Amanda Howes  
Jade Hudek  
Elise Hudson  
Chris Humphreys  
Brian Hunter  
Erin Hurley  
Winifred and Peter Hussey  
Tara Johnson & Adam Hutschreider  
Deborah Hyman & Alan Ruder  
Alexandra and Thomas Immel  
Matt & Abby Inpanbutr  
Laura Inveen and William Shaw  
Nicole Jabaily  
Pamela and David Jackson  
Jay Jamerson  
Adrienne James  
Ola Jarvegren  
Justin Jed  
Cassy B. and Jeff Johnson  
Carol & David Johnson  
Genevieve Johnson  
Kathryn & Mark Johnson  
Phyllis Johnson  
Katarzyna Jonczyk  
David Jones and Vicki Weeks  
Ms. Norma Jones  
Nichole Joyner  
Izabella & Elijah Kaplan  
Kirin & Josh Kaplan  
Gwen and Mustafa Kapusuzoglu  
Michelle Watson & Kurt Kapusuzoglu  
Anne Karpinen  
Nazneen Kateli-D'Souza & Ian D'Souza  
Angela Katsuyama and Michael Ailion  
Charles & Courtney Keen  
Angela Kennedy  
Jordan Kepler

Eunyoung Kim  
Helen Kim  
Sharon Kioko  
Karen Kirr  
Kay and Jack Kite  
Patricia Kiyono and Greg Traxler  
J Timothy Kleespies  
Jill Klein  
Melissa and Merle Knapp  
Kate Knappert  
Deb and Robert Knetzger  
Amy Knobbs  
Paul Knopf  
Mary Koch  
Gwynne Kohl and Jonathan Kanter  
Robert Kosara  
Adrienne Kosewicz  
Leann and Paul Kostek  
Heather Kravas  
Kara & Paul Kreider  
Al Krider and Dee Ann Campbell  
Kimberly Krishnaswamy  
Robert Kristjanson  
Andrew Krueger  
Brooke Kruse  
Carey Kuhn  
Kai Kunkel  
Suhas Kurse  
Jocelyn Lacey  
Steven Lafrance  
Ronda Lagerbaug Miller and  
Bradley Miller  
Lisa Adriance & Tricia Lambie  
Renata & Stephen Lampkin  
Kurt Lantz  
Annual Report Name  
Amy Laybourn  
Laura Jewett Leahy and Patrick Leahy  
Janetta Lee  
Ya-Fang Lee  
Helen & Robert Lehman  
Anita Lehmann and Rex Lyon  
Dr. Chris and Jyl Leininger  
Teresa & Michael Lennstrom  
Magdalena Leu  
Amanda Levenberg and Clay McDaniel  
Patricia and Will Lewis  
Apakorn Lindberg  
Ann Zavitkovsky and Parker Lindner  
Sarah Lindner  
Monika Lirio and Jeff Taylor  
Jura Litchfield  
Lynn Livesley & Kevin O'Neill

Patti & Rick Lochner  
Hilary Loeb & Marc Friedman  
Janel and Brian London  
Sean Lonergan  
Martha Hyde and Patrick Long  
Priscilla Long  
Toni Long  
Emma Lopez  
Mary Lord  
Roberta Lord  
Nicole Lorona  
Steven and Jolene Louie  
Judith Lovelace  
Barbara Lycett and John Parchem  
Jordan Lyon  
Alice MacCuish and Chris Fassel  
Brandon Macinnis  
Rebecca Mackle  
Kate Macneale and T Adam Welman  
Jake & Meg Mahoney  
Erickson Maia  
Alexander H Malek  
Carolyn Mallahan  
Denise and Gerard Mamaril  
Kim Manis  
Amy Mann  
Susan Manning  
Monika & Paul March  
Pam and Gregory Marchand  
Megan Elizabeth and John Marek  
Sheryl Marks and Stanford Ackley  
Frances Marshall and Chuck Lare  
Christina Martin  
George Martin  
Lisa Martin  
William D Martin  
Cheri and Rob Marusa  
Margaret Masar and Geoffrey Nichols  
Lora Mason  
Walter Mason  
Rev. Tiare Mathison  
Caroline Mburu  
Pamela & Bob McCabe  
Julie Daman and Stephen McCandless  
Mary and Marty McCune  
Diana McFarlane  
Mary McHugh and Anthony Olney  
Ruby McLachlan  
Mari McLellan  
Brian McManus  
Trish and Jerald McNeil  
Joah and Mark McPherson  
Chris Mealy





## 2019 Individual Cash Donors [continued]

Margarita Medina and Emma Le Du  
Anonymous  
Stephen Meyer  
Martha Jane Meyerding  
Susan Mikkelsen  
Christine Miles-Mazarek  
Omri Milstein  
Alida Miranda-Wolff  
Shalini and Gregg Miskelly  
Joshua Monaghan  
Michael and Mehri Moore  
Mona Moraru  
Jane Mushabec and Arthur Morgenroth  
Diane Morrison and Joel Bradbury  
Leona and Jim Morton  
Melissa Wu and Brian Mount  
Maureen Mourton  
Mary Mueting  
Peter Mueting-Nelsen  
Susan Mullen  
Harry & Judi Mullikin Fund  
Sharon Rodgers and Duncan Munro  
Crystal Munson  
Corey Murata  
Roger Nachman  
V Nagarajan  
Khodadad Naimi  
Kari Nasby  
Richard Nelson  
Sian Newman  
Jeanne and Mahlon Nichols  
Walter Nickel III  
Sara Nickerson and  
Matthew Reid-Schwartz  
Kelly and Dermot Noonan  
Jeanette Norris and Steven Buck  
Helene Obradovich and Ed Phippen III  
Daniel Ogborn & Sara Weaver  
Patrick & Hannah O'Leary  
Juan Olivares  
Eileen Olson  
Erik Olson  
John Olson & Colleen Dillon  
Carol and Thomas Olson  
Timothy O'Malley  
Alexandra O'Reilly and Charles A.  
Desiderio  
Katherine Page  
Jeremy Palenchar

Margaret Mary Palo  
Donald Parda  
Emily Parker and Christopher Dore  
Grace Parker & Kenneth Wells  
Leslie Parker  
Ms. Susan Parker  
Andy Parks  
Beth Struckhoff and William Parks  
Emma Parks  
Alison and Lee Parsons  
Fred Paulsell  
Jane and Allan Paulson  
Georgia Payne  
Jenn Pearsall  
Margery Perdue  
Julian Perez  
Lisa Perry  
Dr. Theano Petersen  
Sarah Phillips and Fraser Havens  
Eric Pidkameny  
Catherine and Christopher Pirich  
Barbara Pistoresi  
Ronit and Colin Plank  
Dan Poliak  
Carita Polin  
Alessandra Pollock and Greg Foltz  
Katie Portier & Brett Christie  
Barb Potter  
Debbie Potter  
Lauren & Jon-Michael Pratt  
Geoffrey Prentiss  
Paul Quay  
Michelle Quesada  
Becky Lauren Quinlan and Sean Quinlan  
Ann Rackl  
Deborah Ramos  
Virginia Ratliff and Dennis Schaffer  
Megan & Matt Ravagni  
Julie Ray  
Emily and Dan Raymond  
Shilpa Reddy  
Joseph Renfield  
Erin and Scott Reynolds  
Jenny Rhodes  
Marlee and Michael Richard  
Ralph Richardson  
Scott R. Richardson  
Judith Rickard  
Janet Riordan  
Margaret Rittenhouse  
Amelia Roberts  
Ben Robinson  
Ellen Robinson

Julia Robinson  
Paul Robinson & Mireille Sema  
Sherry Robinson  
Tim Roth  
Edith and Mike Ruby  
Elizabeth Rudd  
Anne Ruljancich  
Jennifer Cells Russell and  
Read Handyside  
Mary Russell  
Michelle Ruth Frindell  
Diana Ryesky & Gerald Delay  
Sharon and Leonardo Salvador  
Cathryn and Carl Sander  
Jeffrey Saul  
Brandon Scalf & Mike Cox  
Kathy and Lee Schahrer  
Barbara Ann & Lloyd Schneider  
Ann Schuh  
Kristin Schwab  
James Schwartz  
Michelle and Jordan Schwartz  
Jean Schweitzer  
Barbara Scott  
Craig Scott  
Gwen Scott  
Megan Scoville  
Amanda Seever  
Kristan Seibel  
Brian Selfon  
Ponnampalam Selvaratnam  
Victoria Selwyn  
Mireille Sema  
Linda Sewell  
Elya Schechtman  
Carrie Shen  
Marta & Carolyn Shen  
Anonymous  
Mike Shields  
Michael Shiozaki  
Cay Shoemake  
Cathy and Fred Short  
Jason & Andrea Shull  
Jackie Fradkin and Oori Silberstein  
Karen and Jamie Simone  
Amy Singer  
Manpreet Singh  
Matthew Skeel  
Colleen Smith  
Halle Smith  
Virginia and James Smyth  
Krista Sneller & Andy Weaver  
Ann and Steven Sonnen



## 2019 Individual Cash Donors [continued]

Gretchen and Lyle Sorensen  
Kathleen Spector  
Rick Springer  
Lawrence Spurgeon  
Alison Stamey & W.C. Twig Mills  
Kelly Powers  
H.E. Starks & I.R. Mackay  
Tony and Sara Stearns  
Danielle and David Steele  
Kimberly Steffensmeier  
Steven Stelter  
Paige Stockley  
Jennifer Stoloff  
Judith Stoloff  
Storck/Park Family  
Judith Swain and David Strauss  
Diana Streat  
Mrs. Michele Stutzman  
Brenda Stuvek  
Kim Colwell & Patrick Suhrbier  
Becky Sukovaty and Toby Thaler  
Jody Sullivan  
Rebecca Sullivan and Eric Westberg  
Stephanie and Eugene Sun  
Shelly Sundberg  
Marian Svinth and Gene Slape  
Daniel Swanson  
Mark Sweere  
Janet & Frank Szofran  
Lisa Maves & Adam Szofran  
Carolyn Taggart  
Brian Taintor  
Natalie Tarantino  
Deborah Kerdeman and David Tarshes  
David Tate  
Jennifer Tawatao  
Jeff Taylor

Heidi Thomas  
Evelyn Thompson  
Gary Thomson  
Luz Toledo  
Katherine Tonkin  
Claire Topal & Dr. Lin  
Anna Trakhman  
Izabella and Tiberiu Trofin  
Amy Truong  
Joan and Louis Truskoff  
William Turley  
Loretta and Daniel Turner  
Louisa Turner  
Kate Turpin & Michael Cvitkovic  
Cathy Tuttle  
Eric Tuttle  
Brooke Vail  
Jane & Travis Vail  
Vaiva Vaisnys  
Vivian Valencia  
Jane & Mark Vande Kamp  
Andrew Varnes  
Anonymous  
Alan Viosca  
Jana Vitols  
Colette Voegelé  
Sharon and James Vonasch  
Elizabeth Waddell  
Erika Wagner  
Robert Walker  
The Waltmunson Family  
Sarah Wandler  
Susan and Jay Wardle  
Ann and Gary Weber  
Jake Weber and Kevin Kane  
Sarah Webster  
Stacey Wedlake

Robin Wehl-Martin & Clay Martin  
Wendy Weiker  
Ms. Perry Welch  
Clark Welden  
Jen Wenrick  
Dina & Martin Westerfield  
Cynthia Whitaker  
Anonymous  
Rebecca White  
Suzanne Whitehead and  
Russell Patterson  
Susan Wickwire  
Lisa Callegari & Greg Widmyer  
Judy Cites & James Wilke  
Karina Williams  
Ms. Laura Williams Argilla  
Linus Willson  
Jo-Anne and Earl Wilson  
David Wine  
Tara Winkler  
Jeff Woiton  
Dylan Wolf  
Darryl Wong  
Emily Wong  
Sara Woods  
Chris Wrenn  
Katie & Dustin Wright  
Susan Bidwell Wright  
Annabel Wrightsman  
Amanda Wyatt  
Yi-Fen Yang  
Sally & Bryan Yates  
Chris Ynzunza  
Lisa Younglove  
Maja Zavaljevski  
Marcia and Klaus Zech

## 2019 Businesses, Churches, and Event Sponsors

BECU  
Banner Bank  
evo  
First Fruits Foundation  
Fremont Baptist Church  
Fremont Chamber of Commerce  
GloryBee  
Grocery Outlet of Aurora

Hello Robin  
HomeStreet Bank  
Jamie Flaxman Coldwell Banker Bain  
Investure, LLC  
Kroger Zero Hunger/Zero Waste  
Foundation  
Molly Moon's Homemade Ice Cream  
Parks Family

Salmon Bay Community Lending  
SHKS Architects  
Verity  
Verity CU - Wallingford Branch  
Wallingford Presbyterian Church  
Wallyhood

## 2019 Anna Banana Fund Donors

The Anna Banana Milk Fund, created to honor the memory of Molly Moon's little sister Anna, provides fresh milk to our community every week. Thank you to everyone who donated to the Milk Fund in 2019!

Lauren Aguirre  
Andrea Alfaro  
Barbara and Stephen Anderson  
Eric Anderson  
Melissa Angeles-Robles  
Gabriella Arrastia  
Kiruthika Arulmozhi  
Judith and Max Bailey  
Valerie Bak  
Stephen Baldock  
Oh Banbury  
Michaela Barrett  
Dalia Bernal  
Jason Beverly  
Brenna Bews  
McKenzie Bicher  
Artemis Bobbitt  
Hannah Booth  
John Boyd  
Kasha Bradford-Adams  
Tanesha Brester  
Denise Brown  
Sydney Burns  
Brittney Cash  
Lisa and Gabe Castillo  
Oliver Chang  
Morgan Charnley  
Sam Choi  
Mariah Clayton  
Madeline Cooke  
Aronka Cooper  
Susan Corman  
Piper Cramer  
Anastasia Crosier  
Lillie Day  
Zachary Demers  
Linda Derschang  
Peter Dyer  
Brian Edeza  
Lauren and Paul Edlund  
Nora Elkerton  
Iris Estell  
Drew Ferguson  
Sofia Fernandez Salinas  
Nikyra Finkley  
Cameron Fletcher  
Gregory Flores  
Rachelle Fontilea  
Hannah Forbes

Jonathan Ford  
Austin Fujita  
Elijah Gelb  
Julia Goens  
Laura Goens  
Lillianna Gonzales  
Rebecca Graves  
Nickolas Gucker  
Jacob Harvey  
Louisa Heal  
Elboine Henry  
Heather Hodge  
Hannah Hoffmeyer  
Elizabeth Holmes  
Sam Hopkins  
Audrey Huber  
Courtney Huston  
Demetrios Ilias  
Safiya Jimale  
Taylor Kaminski  
Ana Kelly  
Sara Keshmiri  
Iman Khalaf  
Emily Kim  
Al Krider and Dee Ann Campbell  
Jocelyn Lacey  
Matthew Lam  
Bruce Leban  
Madison Longbottom  
Stephanie Lowe  
Avry Martinson  
Tira McGavin  
Kenneth Meyers  
Bradleigh Miller  
Molly Moon's Homemade Ice Cream  
Kimi Moore  
Shelby Neal  
Kevin Neitzel  
Molly Moon Neitzel & Zack Reinig  
Abigail Nelson  
Michelle Newblom  
Colin Newton  
Megan Norton  
Kaelan O'Neill  
Katie Okumura  
Julia Olson  
Morgan Olson  
Daniel Onstott  
Mara Palmer



Ruslana Pashkova  
Ian Pecoraro  
Susan Pengilly & Craig Holmquist  
Jeremy Pintus  
Randi Rachlow  
Jillian Reddick  
Alanna Reeves  
Marjorie and Bill Reinig  
Patricia Salgado  
Eduardo Sanchez  
Kathy and Lee Schahrer  
Samantha Shafer  
Rachel Shuey  
Jason & Andrea Shull  
Micah Slaughter  
Miranda Smith  
Raven Smith  
Gal Snir  
Ellie Soth  
Brian Stermitz  
Carly Stilson  
Alexandria Strosahl  
Janti Sun  
Reed Trachy  
Benjamin Trujillo  
Jada Valdry  
Loren VandenBerghe  
Lynn Walton  
Conor Weeks  
Eva Whited  
Molly Winney  
Gale Woodworth  
Ariel Wygant  
Yanni Zhang





## 2019 Resiliency (Monthly) Donors

Michele Acquavella  
Amanda Allen  
Anonymous  
Joey and Aubrey Ashenbrenner  
Amy Avnet and James MacConnell  
Kimberly Baker  
Erica Barnhart and Matt Barnhart  
Linda Bevis  
Jen & Jonathan Boone  
Maureen Carr & Dan Charlson  
Adam Criswell  
Jenna Crouch  
James & Lee Crouse  
Mary Anne Curtis and Amy Schwegler  
Frances DeMarco  
Mark Dersom  
Kathleen and Michael Dommer  
Ian Dotson  
Steven Dunham  
Jane Elliott  
Kathleen Fisher  
Nancy Geiger and Michael Krasik  
MaryBeth Gilbrough and Tom Helser  
Ruby Grynberg  
Becky Harbine  
Olivia Hendrix and Greg Meily

Karen Hirsch  
Iris Hodgson  
Jay Jamerson  
Antonia Jindrich and David Dicks  
Kathryn & Mark Johnson  
Eric Jones  
Patricia Kiyono and Greg Traxler  
Mary Koch  
Al Krider and Dee Ann Campbell  
Douglas Larson  
Annual Report Name  
Lynn Livesley & Kevin O'Neill  
Stephanie Lowe  
Anna Marburg  
Rev. Tiare Mathison  
Caroline Mburu  
Ashley Miller  
Marjorie Walter and Timothy Moran  
Robert and Kiyomi Morton  
Taylor & Ryan Moss  
Jean Myers  
Deborah Nelson  
Stella Newman  
Carol and Ralph Nussbaum  
Helene Obradovich and Ed Phippen III  
Margaret and Paul Olson

Paula and Richard Olson  
Mary and Steve Orth  
Andy Parks  
Cecilia Paul and Harry Reinert  
Jane and Allan Paulson  
Kristen and John Petersen  
Eric Pidkameny  
Ian Porter  
Michelle Quesada  
Beth Randall  
Mr. Brian Rowe  
Brandon Scalf & Mike Cox  
Cay Shoemake  
Matthew Skeel  
Brian Stack  
Kim Colwell & Patrick Suhrbier  
Aaron Sutter  
Janet & Frank Szofran  
Natalie Tarantino  
David Tate  
Loren VandenBerghe  
Jana Vitols  
Katie & Dustin Wright  
Catharine Youngs

## Community Campaigns

Thank you to the following people who led Community Campaigns through birthday parties, concerts, raffles, diaper and food drives, and more!

Adobe  
Annika Baldwin  
Chidamoyo Christian Hospital  
Eastlake Zoo Tavern  
Emily Colleran  
Equilibrium Farms  
Green Lake Elementary School's PTA  
Guitar Outlaws

Izabella & Elijah Kaplan  
Judith & Max Bailey  
Judith Stoloff  
Kids on 45th  
Krista's Music Studio  
Music Center of the Northwest  
Northwest Fitness Project  
Phinney Neighborhood Association

Roberta Lord  
Salmon Bay Community Lending  
Seattle Pops  
St. John Lutheran Church  
Steve Kirsch  
Tableau  
The School of Rock  
Wallyhood

## 2019 Grantors

Aderhold Family Fund  
Amica Companies Foundation  
BECU  
Catherine Holmes Wilkins Foundation  
David McKinlay Trust  
Fales Foundation Trust

Fred H. & Mary S. Dore Charitable  
Foundation  
Harvest Foundation  
Harrington Schiff  
Kroger Zero Hunger/Zero Waste  
Foundation

Moccasin Lake Foundation  
Muckleshoot Charitable Fund  
OneFamily Foundation  
Puyallup Tribe of Indians  
Schiff Foundation  
Tableau Foundation



## 2019 Individual In-Kind Donors

Amanda Adkins  
Linda Adkins  
Fatiha Aghribi  
Scott Allard and Heather Hill  
Jamie Angell & Ken Rice  
Anonymous  
Jerolyn Armstrong  
Erika & Austin Ashenbrenner  
Joey and Aubrey Ashenbrenner  
Chetane Azhenya  
Mary Baebler  
Shinzy Baek  
Laura Baldwin  
Victoria Barbaglia  
Tiffany Barnes  
Anne Beasley  
Sarah Beazley  
Kerby Beckman  
Rev. Kevin Beder  
Clara Behnke  
Tudi Bender  
Judith Bendor  
Dagny Berstis  
Steven Bhutra  
Kathy Biermanski  
Clayton Binkley  
Mary Beth Blackburn  
Deniece Bleha  
Heidi Blythe  
Melinda Bocci  
Brandi Bratton  
Nao Brodin  
Angela Burlic  
Angela Burlie  
Lisa Calavetta  
Donna Campbell  
Nicole Carbine  
Anonymous  
Deb Carstens  
Evelyn Castaneda  
Mayra Castaños  
Lisa and Gabe Castillo  
Stacy & Ramiro Cecchet  
Margaret Certain  
Jo Chattalas  
Anindita Chatterjee  
Lisa Chick  
John Chun  
Caroline Coates & Geoff Gottlieb  
Emily Colleran  
Elizabeth Connolly

Cecilia Cordova  
Audrey Crissman  
Erica Cunningham  
Mary Anne Curtis and Amy Schwegler  
Ashley D'Amico  
Lesli Dalaba  
Olivia Dalesandro  
Claudia Davis  
Tala de los Santos  
Lauren Deatrick  
Richard DeBroux and Ingrid Wertz  
Delaney Dechant  
Kim Decker  
Anonymous  
Jane Dirkse  
Heather Dohan  
Jackie Donalson  
Trenton Dos Santos-Tam  
Brooke Doyle  
Gwen Drolet  
Kendra Dueno  
Robert Earhart  
Emily and Michael Eberle-Levine  
Ruth Emerson  
Joanna Endo  
Gretchen Eschenwald  
Angelica Esquivel  
Kirsten Evans  
Shelley Faivre  
Rachel Feldstein  
Arlette Fellores  
Dapin Feto  
Ellie Fields  
Medhin Fitwi  
Ingen Fitzhugh  
Jamie Flaxman  
Alexandra Fleming  
Louisa Foreman  
Lorna and Marcus Forgey  
Jan Gallagher  
Elizabeth Gamberg  
Claudia Garcia  
Charlotte Garcia-Ramos  
Joe Garibay  
Lauren and Peter Gaylord  
Maria Gaytan  
Christine and David Gedye  
Rafi Ginsburt  
Virginia Gonzales  
Virginia Gonzalez  
Kazuye Good  
Tom Good  
Amy Green  
Bonnie Grosby

Carrie Richard and Brian Guggino  
Antoinette Hager  
Nazim Haji  
Razia Hamid  
Marisol Hanley  
Mitch Hansen  
Edward Hardy  
Ryan Hawthorne  
Chelsey Hays  
Carolyn and Greg Heberlein  
Sarah Hein  
Mary Helbach  
Jennifer Helfer  
Shannon Henderson  
Brooke Henn  
Katie Hill  
Valerie Holloway  
Karla Honda  
Nathan Hoover  
Charles Huber  
Juei-Chuan Hung  
Susy Jacobs  
Cynthia Jed  
Amy Jensen  
Antonia Jindrich and David Dicks  
Denesia Johnson  
Genevieve Johnson  
Kathryn & Mark Johnson  
Kjersti and Kelcey Johnson  
Per Johnson  
Katarzyna Jonczyk  
Noemie Juaire  
Matt Kane  
Ern Kasparova  
Margarita Kasparova and  
Alexey Stebunov  
Tomoyo Kato  
Kazue and Yoshito Kawakatsu  
Linda Kemper  
Belinda Kephart  
Cristina Key  
Tesfalem Kidane  
Cassius Kim  
Steve Kirsch  
Lalit Kraushaar  
Elizabeth Lancaster  
Kae Lang  
Kurt Lantz  
Cara Lauer  
Arthur Lee  
Susie Lee  
Chris Leighton  
Amanda Levenberg and Clay McDaniel  
Nora Lih  
Melissa Lilley  
Nora Lindberg

## 2019 Individual In-Kind Donors [continued]

Leda Linde  
Delaney Lindell  
Sarah Lindner  
Renee Lindstrom  
Kirby Lochner  
Patti & Rick Lochner  
Austreberta Lopez  
Valentina Loron  
Anessa Lynn  
Vida Lyons  
Kelsey Mack Land  
Steve Mack  
Pamela Malek  
Jenny Hedgerow  
Anna Marburg  
Pam and Gregory Marchand  
Casey Marks  
Sheryl Marks and Stanford Ackley  
Chad Marsh  
Victoria Marshall  
Megan Marston  
Jenn Martin  
Samsara Martin-Gray  
Elsie Martinez  
Lora Mason  
Eric Matza  
Caroline Mburu  
Carrie McCarthy  
Kathleen McCauley  
Michael McCulley  
Connor McDermott  
Ed McGraw  
Gordon McHenry and  
Dorina Calderon-McHenry  
Georgina McManus  
Eimear McNamara  
Brittany Mellander  
Mona Memmer  
Marcella Menegale  
Melody Mertens  
Ted Metcalf  
Tiffany and Michael Minor  
Frank Miranda  
Ashley Monson  
Marjorie Walter and Timothy Moran  
Yuko Morihino  
Zenith Morrison-Weiss  
Taylor & Ryan Moss  
Olga Munoz-Tellez  
Ekou Murakami  
Anita Nadelson  
Frema Nadelson  
Floyd Nakayama

Agrawal Neha  
Molly Moon Neitzel & Zack Reinig  
Shirley Nelsen  
Melanie Newham  
Pamela Ng  
Katherine Nguyen  
Eva Nicholas  
Sue and David Nicol  
Spyridon Nikon and Family  
Kathleen M Nilan  
Kelly and Dermot Noonan  
Jeanette Norris and Steven Buck  
Anisa Nun & Anwar Ugas  
Eve Okendo  
Jessica Olson  
June Olson  
James Ortiz  
Aaron Pacheco  
Christa Palmberg  
Priti Pareek  
Michelle Parnes  
Alison and Lee Parsons  
Jigna Patel  
Jane and Allan Paulson  
Heidi Pauwels  
Lizzy Pelletier  
Kaya Peng  
Margery Perdue  
Messiah Perry  
Bruce Petrie  
Ginnie Phillips  
Carita Polin  
Alessandra Pollock and Greg Foltz  
Lauren & Jon-Michael Pratt  
Gordon Pun  
Christy Qualin  
Michelle Quesada  
Emily and Dan Raymond  
Yukie Reed  
Amy Reiss  
Erin and Scott Reynolds  
Ella Rich  
Sara Robbins and Funso Adekanbi  
Jon Robertson  
Moogali Romberg  
Kathy Rossi  
Austin Ruf  
Lauren Saddler  
Simone Saldhvia  
Khalifa Salem  
Cathryn and Carl Sander  
Paola Santa  
Erina Savara  
Christine Maxwell Schoening  
Sheryl Schwartz

Sachita Shah  
Julie Shelton  
Dawn Sibanda  
Antoinette Silva  
Christina Sirutis  
Veronica Sisk  
Julietta Skoog  
LaFawn Smith  
Margo Snow  
Tsegaye Sombo  
Kerianne Spier  
Thomsun and Or Sriburadej  
Danielle and David Steele  
Vicki Stewart  
Rachel Stoermer  
Patty Stolzoff  
Keegan Stringfellow  
Alicia Tellez  
Tsehay Tesfaye  
Lisa Thompson  
Claire Topal & Dr. Lin  
Claire Topol  
Modesta Torres  
Charlotte Trelease  
Paul Trinh  
Kristine Tsujikawa  
Rosalva Tun  
Loretta and Daniel Turner  
Eduardo Vazquez  
Thuy Vu  
James Walters  
Erica Ward  
Ann and Gary Weber  
Rhoda Wegter  
Kathy Wehle  
Kristina Weidert  
Jesse Weiland  
John Weiner  
John Werner  
Rachel Wernet  
Allyson Weymier  
Anne Whitehead  
Suzanne Whitehead and  
Russell Patterson  
Emily Whitling  
Michelle Williams  
Mary Winslow  
Dylan Wolf  
Annabel Wrightsman  
Katherine Xue  
Yi-Fen Yang  
Roberto Ywamoto  
Suling Zhong  
Carrie Zizza



## 2019 Business In-Kind Donors

A la Mode Pies  
Adobe Systems Inc.  
Adobe Volunteer Team  
All The Best Pet Care  
Amazon Web Services  
AMC - Oaktree Cinemas  
Amica Mutual Insurance Company  
Anthony's Restaurants  
Archie McPhee  
Argosy Cruises  
Auclair Winery  
Avenue 5 Residential  
B. F. Day  
B.F. Day School  
Bad Jimmy's Brewing Co.  
Bakery Nouveau  
Banya 5 Urban Spa  
Bartell Drugs - Wallingford  
Big 5 Sporting Goods  
Bloedel Reserve  
Bombas, LLC  
Brooks Running  
Bureau of Fearless Ideas  
Calvary Wallingford Church  
Capital Pacific  
Center for Perinatal Bonding & Support  
Charles Smith Wines  
Chef John Howie Restaurants  
Chihuly Garden and Glass  
Children's Museum  
Chuck's Hop Shop  
Columbia Winery  
Community Mobilization  
Cooperative Children's Center  
Copperworks Distilling Co.  
Costco Wholesale Corporation  
Crackerjack Contemporary Crafts  
Crystal Seas Kayaking  
Damsel & Hopper Bake Shop  
Daniel Bagley Elementary PTA  
Daniel Bagley Elementary School - 3rd  
and 4th Grade  
Dick's Drive-Ins, Ltd., L.P.  
Duke's Chowder House  
Ecolibrium Farms  
Emerald City Comic Con  
Evanston P-Patch  
Experience Momentum  
Fairmont Olympic Hotel  
Flying Apron

Food Lifeline  
Foss Maritime Company  
Fred Meyer Customers  
Fred Meyer Greenwood  
Fremont Abbey Arts Center  
Fremont Brewing Company  
Fremont P-Patch (Whirled Peas)  
Friday Afternoon Tea  
Full Tilt Ice Cream  
GameWorks  
Garage Billiards  
Georgetown Brewing Co.  
Girl Scout Troop 45173  
Global Acts of Compassion  
GloryBee  
Good Shepherd P-Patch  
Grand Central Bakery--Wallingford  
Green Lake Community Center -  
Pathway of Lights  
Green Lake Elementary School PTA  
Green Lake Elementary School PTA  
Social Justice Committee  
Greenwood P-Patch  
Gregg's Cycle  
Grinning Yogi  
Grocery Outlet of Aurora  
Guitar Outlaws  
Hale's Ales Ltd.  
Hazel Heights P-Patch  
Huckleberry Forest Preschool  
Hunger Goblin  
Irwin's Neighborhood Bakery & Cafe  
iStream Planet  
Ivar's  
Jak's Alehouse  
John Stanford International School  
Jones & Associates, LLC  
Keller Williams Greater Seattle  
Ken's Market  
Kenmore Air  
KEXP  
Kids on 45th  
Kipling Law Firm  
Krista's Music Studio  
Ladywell's Vitality Spa & Sauna  
Lake Union Crew  
Lantern Brewing  
Latta Wines  
Leslie Mackie - Macrina Bakery and Cafe  
LuminAid Lab, LLC  
Majestic Bay Theatres  
Marketime Foods  
MarqMetrix Inc.

Matthews Winery  
Maya's Whale Watching  
McClure Middle School  
McMenamins, Inc.  
Merrill Gardens--University  
Michael Shiozaki's Church  
Microsoft Access Bar Crawl  
Microsoft Advertising  
MiiR  
Mike Biskup Art  
Molly Moon's Homemade Ice Cream  
MudBay  
Museum of Pop Culture  
Neighborhood Grills  
New Roots Organics  
Nike  
Northgate Mall  
Northwest Film Forum  
Northwest Harvest  
Northwest Outdoor Center  
Novelty Hill - Januik Winery  
NW Cleaning Angels  
Pagliacci Pizza  
PCC Natural Markets  
Pecado Bueno  
Phinney P-Patch  
Portage Bay  
Puzzle Break  
QFC - Wallingford  
Queen Anne Helpline  
Rain City CPA  
Razzi's Pizzeria  
Red Star Taco Bar  
Ride the Ducks  
Ridwell  
RSVP (Retired & Senior Volunteer  
Program)  
Rub-A-Dub Dog  
Safeway - Roosevelt  
Safeway - U Village  
Salmon Bay Community Lending  
School of Rock Seattle  
Sea Creatures Restaurants  
Sea Monster Lounge  
Sea Wolf Bakers  
Seattle Aquarium  
Seattle Art Museum  
Seattle Boulderling Project  
Seattle Center Productions  
Seattle Children's Theatre  
Seattle Mariners  
Seattle Pops  
Seattle Shakespeare Co.

## 2019 Business In-Kind Donors [continued]

|                               |                                       |                                       |
|-------------------------------|---------------------------------------|---------------------------------------|
| Seattle Symphony              | The Sock Monster                      | Vigor Marine                          |
| Seattle T2P2                  | The Stage Door/One Cup Coffee Co.     | Wallingford / United Methodist Church |
| Seattle Tilth                 | The Summit at Snoqualmie              | Wallingford Boys & Girls Club         |
| Second Cup                    | The Woodhouse Wine Estates            | Wallingford Center                    |
| Shoreline Central Market      | Todo Bien! Wellness Center            | Wallingford Community Senior Center   |
| Snug Harbor Resort            | Troll's Knoll P-Patch                 | Wallingford Farmers Market            |
| St. Andrew's Episcopal Church | Troop 517 Shilshole                   | Wallingford Presbyterian Church       |
| St. Benedict Catholic School  | True Value Hardware (Greenwood        | Westland Distillery                   |
| St. Benedict Church           | Hardware)                             | WIC                                   |
| Stokes Lawrence, P.S.         | Tutta Bella Neopolitan Pizzeria -     | Wild Waves Theme and Water Park       |
| Sunnyside P-Patch             | Wallingford                           | Wing Luke Museum                      |
| Supermarket Saturday Donors   | Unexpected Productions                | WITH                                  |
| Sustainably Organized         | University House Resident Association | Woodland Park Cooperative School      |
| Taproot Theatre Company       | University Village                    | Woodland Park Zoo                     |
| Temple Beth Am                | UWRA Hi-Lites Garden Club             | Yazdi Clothing For Women              |
| The Empowerment Plan          | Veraci Pizza                          | ZIVA Mediterranean Foods              |
| The Fred Meyer Foundation     | Verity Credit Union                   |                                       |
| The Reptile Zoo               | Verity CU - Wallingford Branch        |                                       |

## 2019 In Honor Of Donors

|  |  |
|--|--|
| In Honor of Scott Allard and Heather Hill<br>Tessa and Steve Hill  | In Honor of FamilyWorks Staff<br>Kathleen Crompt, Patty Lewis, and Katarzyna Jonczyk   |
| In Honor of Joey and Aubrey Ashenbrenner<br>Wendy Ashenbrenner   | In Honor of Alexandra Fleming<br>Maureen Mourton   |
| In Honor of Annika Baldwin<br>Becky Anderson, Gunnar Baldwin, Gwynne Kohl, Brian<br>McManus, and Joshua Monaghan | In Honor of Pat and Francis Fullam<br>Robert and Deb Knetzger  |
| In Honor of Luca Cecchet<br>Erin Hurley  | In Honor of Furloughed Federal Employees<br>Lauren Dunnington  |
| In Honor of Linda and Steve Brown<br>Teresa Lennstrom  | In Honor of John Francis Gallogly<br>Ryan Hawthorne  |
| In Honor of Betty & Michael Campbell<br>Kari Nasby   | In Honor of Green Lake Elementary School PTA Social<br>Justice Committee<br>Lynette Baisch, Leya Barr, Andrea Bernasconi, Lisa<br>Christofferson, Lucrezia Colonna, Elizabeth Darlington,<br>Kim Decker, Emily Dunham, Young Jee Filer, Michelle Ruth<br>Frindell, Molly Goldman, Priya Gupta, Arlene Harrington,<br>Amanda Howes, Amy Knobbs, Kimberly Krishnaswamy,<br>Heather Kravas, Kai Kunkel, Sarah Lindner, Sean Lonergan,<br>Jordan Lyon, Diana McFarlane, Margaret Rittenhouse,<br>Elizabeth Rudd, Mary Ellen Russell, James Schwartz,<br>Carolyn Shen, Amanda Seever, Marta Shen, Amy Truong,<br>Erika Wagner, Karina Williams, Sara Woods, and<br>Katie Wright |
| In Honor of Lisa and Gabe Castillo<br>Chris Abbey  | In Honor of Laurie Harris<br>Kari Nasby  |
| In Honor of City of Seattle<br>Julian Perez  | In Honor of Winifred and Peter Hussey<br>John (Tony) Stearns   |
| In Honor of Emily Colleran<br>Robin Colleran and Halle Smith   |  |
| In Honor of John Curtin<br>Joe Curtin  |  |
| In Honor of Arielle D'Souza<br>Nazneen Kateli-D'Souza  |  |
| In Honor of Sibby Deforest<br>Marion Deforest  |  |
| In Honor of Emily Drake<br>Steven Lafrance   |  |

## 2019 In Honor Of Donors [continued]

In Honor of Dan Johnson and Jill Chelimer

Phyllis Johnson

In Honor of Josh

Tiare Mathison

In Honor of Kevin Kane

Cheri Marusa

In Honor of Jack and Marilyn Knetzger

Robert and Deb Knetzger

In Honor of Phoenix Laughlin

Lynn Walton

In Honor of Roberta Lord

Alison Gates, Barbara Greenough, Mary Lord, Susan Manning, Victoria Selwyn, Ruth Caple, Paula Gallagher, Jenny Hacker, Marybeth Hillard, Dan Poliak, Kristin Schwab, Gwen Scott, and Laura Williams Argilla

In Honor of Amanda Levenberg and Clay McDaniel

Arthur Morgenroth

In Honor of Caroline Lyman

Shilpa Reddy

In Honor of Eilieen Marks

Sheryl Marks

In Honor of Terrie McCoy

Elisabeth Dekker

In Honor of Dr. Randi Morisson

Dina Westerfield

In Honor of Carol and Ralph Nussbaum

Nan Evans

In Honor of Alison and Lee Parsons

Barbara Scott, Craig Scott, and Helena Haas

In Honor of Alessandra Pollock and Greg Foltz

Jeffrey Saul

In Honor of Michelle Quesada

Rebecca Sullivan

In Honor of School of Rock

Renata Lampkin

In Honor of Seattle Chiropractic & Wellness Group

Alicia Cusack

In Honor of Fanya & Max Selfon

Brian Selfon

In Honor of Devaki Selvaratnam

Ponnampalam Selvaratnam

In Honor of Sierra and Omid

Kimberly Christensen

In Honor of Eloise and Theo Slominski

Margo Snow

In Honor of Eric Sorenson

Lyle Sorenson

In Honor of Spirituality

Suhas Kurse

In Honor of Ellie Stearns

Andrew Krueger

In Honor of Frank Striegl

Leslie Parker

In Honor of Vaiva Vaisnys

Alida Miranda-Wolff

In Honor of Bobby Wagner

Cheri Marusa

In Honor of Wallingford Presbyterian Church

Anonymous

In Honor of Jake Weber

Kathleen Crompt, Ruth Herold, and Debra Potter

In Honor of Linda Welden

Clark Welden

In Honor of Mindy Wyckoff

Kate Hotler

In Honor of Marcia and Klaus Zech

Fred Paulsell

## 2019 In Memory Of Donors

Gabe Castillo in memory of Duane and Emilio

Clark Welden in memory of Edith Blue

Susan Mullen in memory of Susan Mullen's mother

Patricia Salgado in memory of Alina Edith Salgado

Guitar Outlaws hosted a concert to raise funds for our program  
in memory of Parker Margaret

Mary Orth in memory of Marjorie Orth

Rebecca Durham in memory of George Durham

Christina Martin in memory of Manu

Patricia Salgado in memory of Alina Edith Salgado

Christine Miles-Mazarek in memory of Charles Walker

Mary Orth in memory of Marjorie Orth

Patricia Salgado in memory of Alina Edith Salgado

Roger Nachman in memory of Nancy O'Brien

Walter Nickel in memory of Connie Nickel

Patricia Salgado in memory of Alina Edith Salgado

William Turley in memory of Connie Nickel

George Gleason in memory of Rod Backman

Alex O'Reilly in memory of William Weber

Cheryl Marusa in memory of William Weber

Cheryl Marusa in memory of Mel Chopp

Timothy Garrison in memory of Bert Puchtler

Anonymous gift in memory of Paul Rodgers

Loretta Harkness in memory of Marge Wilson

Anne Fote in memory of David Notkin

Bruce Galvin in memory of Robin Galvin

Catherine Short in memory of Bert Puchtler

Amy Singer in memory of Javier Lara

Hal Blumberg in memory of Roslyn Blumberg

Bruce Leban in memory of Lynn Leban

Patricia Salgado in memory of Alina Edith Salgado



# Thank You!

## Find Us Online!

Find out the latest news from FamilyWorks at our various websites and social media:



**Website:** <https://www.familyworksseattle.org/>



**Facebook:** <https://www.facebook.com/familyworksseattle/>



**Twitter:** <https://twitter.com/FamilyWorks>



**YouTube:** <https://youtube.com/channel/UCuV34TQXgCERtGG8a01XYTw>



**Blog:** <https://familyworksseattle.org/blog/>



1501 N. 45th St.  
Seattle, WA 98103

(206) 694-6727